

# Field Days Officials 1963



FRANK TUCKER



C. Pym COOK, B.A., B.Ed., J.P.



I. B. REID, D.D.A.



B. H. PERRY, M.M.



M. BULLE



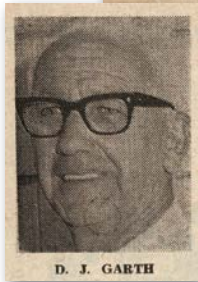
CR. A. CREEK



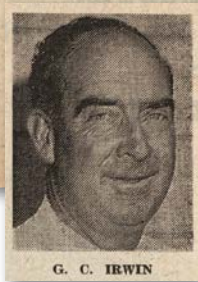
CR. R. A. LEVITZKE



F. W. GRABSCH



D. J. GARTH



G. C. IRWIN

J. S. BOLTON  
B. BURGESS



A. HEARD, L.D.A.



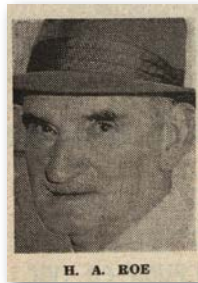
E. J. JOHANSON



E. J. BOLWELL



H. G. SUDHOLZ



H. A. ROE



W. SMYTHE

## Officials 1962-63

**HOSTS TO OFFICIAL PARTY:** E. F. Tucker, President; Cr. R. A. Levitzke, Vice President; C. Pym Cook, Principal Longerenong Agricultural College.

**CHIEF STEWARD:** I. B. Reid. **ASST. CHIEF STEWARD:** A. Bodey.

**STEWARDS:** P. Heard, A. D. Deans, G. Ladlow, J. L. Wallace, J. V. Browne, W. Gill, T. Davey.

**ASST. STEWARDS:** Members of Horsham Agricultural Society and members of Senior Young Farmers' Clubs.

**COMPERE:** J. Castle. **ASST. COMPERE:** I. A. Dahlenburg.

**PROGRAMME DIRECTORS:** J. A. Russell, R. G. Luff.

**COMMUNICATIONS OFFICER:** R. Tucker.

**APPEALS COMMITTEE:** W. E. Dahlenburg, W. Sudholz, H. A. Roe, E. F. Tucker.

**ASST. TO SECRETARY:** E. A. Vincent, J. Flemming.

**OFFICIAL GUIDES:** D. K. Bartels, B. G. May.

**PROGRAMME EDITOR:** R. G. Luff.

**SECRETARY:** B. H. Perry.

### Committee

E. F. Tucker, President	C. Pym Cook
Cr. R. A. Levitzke, V.P.	Cr. A. Creek
J. S. Bolton	F. W. Grabsch
E. J. Bolwell	D. J. Garth
B. Burgess	A. Heard
M. Bulle	G. C. Irwin
	B. J. Johanson
	I. B. Reid
	H. A. Roe
	H. G. Sudholz
	B. H. Perry, Secretary
	W. Smythe, Treasurer

### Sub-Committees

<b>Finance Committee—</b>	<b>Programme and Site Committee—</b>	<b>Publicity Committee—</b>
E. F. Tucker, President	E. F. Tucker	J. Castle
B. H. Perry, Secretary	D. J. Garth	R. Moodie
W. Smythe, Treasurer	I. Garth	H. Sudholz
Cr. R. A. Levitzke	P. Heard	D. Harrison
J. S. Bolton	G. C. Irwin	<b>Catering Committee—</b>
F. W. Grabsch	B. Johanson	Cr. A. Creek
E. J. Bolwell	I. B. Reid	E. A. Francis
		H. A. Roe

**C.W.A., Horsham Branch**  
Mrs. F. G. Mills, Pres.  
Mrs. W. H. Hobbs, Sec.  
Mrs. F. Sanders

— 11 —